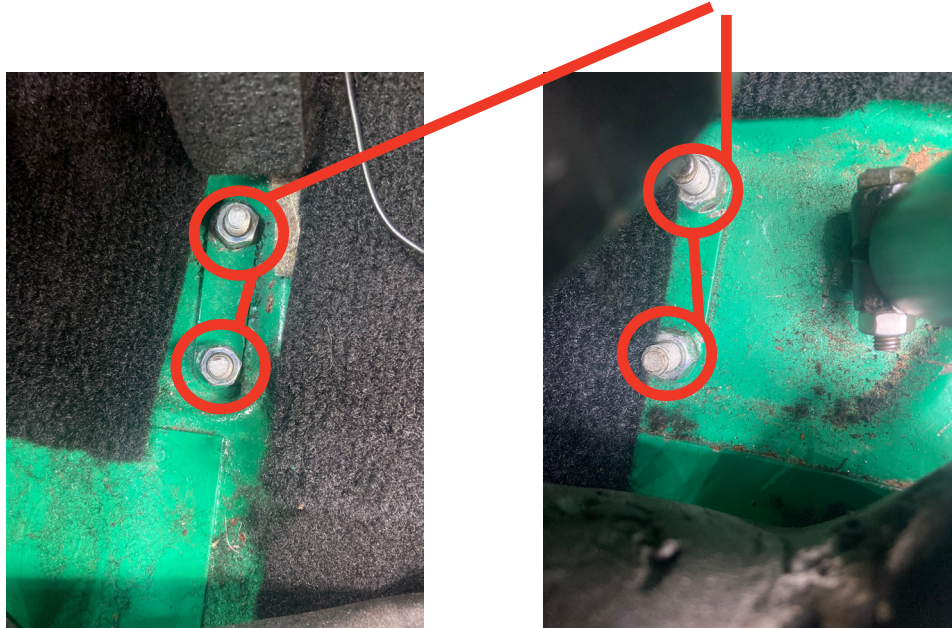


Steering Drop Bracket Fitting Instructions

- 1, Pull back the floor carpet at in the front foot well and slacken the four nuts that are holding your steering rack in position. This allows the steering rack to rotate.



WARNING! Do not turn the steering wheel while the steering rack bolts are loose.

- 2, Locate the column clamp towards the top of the steering column and remove the two sheer bolt fitted. This must be removed first.
- 3, Next remove the U clamp on the steering column from the bracket under the parcel shelf crash rail. This should now allow the steering column to hang freely.

- 4,** Using the two M8 x 35mm bolts and ny-loc nuts install the new drop bracket under the crash rail in the same location as the one you have removed.

(You may find it easier to remove part of your dash board to access the nuts on top of the crash rail.)

- 5,** Now slide the steering column into the drop bracket and place the M8x70mm bolt through the bracket and steering column. Secure this by placing the Ny-Loc nut loosely on the other end of the bolt.

Now you can position your steering wheel at the height you wish and secure this by tightening the M8x70mm Bolt and nut.

(You can now re-fit your dash if you have removed it during this process.)

- 6,** Now you can tighten the four nuts that secure the steering rack in the foot well of the car.